

# NEWSLETTER

## BENT TREE SADDLE CLUB



May 2025

### Inspiring Bonds One Horse at a Time

This seems an appropriate theme for the month of May which is our busiest month yet! April saw the **Masterson Method Demonstration** which helped owners listen to their horses and partner with them to reduce their stress. The month of May brings us the **Saddle Fitting Clinic** which is another opportunity for owners to learn about keeping their horses comfortable and happy. Once your horse realizes that you are aware of his concerns, he begins to trust you, and a true partnership can develop. The **Saddle Fitting Clinic** is also a Club **Cookout** and **General Meeting**. It will be fun, and I hope to see y'all there!

The **Hillside Farm Trail Challenge**, **Western Pleasure Event** and **Obstacle Trail Challenge at the Eubanks' Farm** will highlight the harmony, trust and connection that can form between horse and rider. It's a packed month of May, and there is an event nearly every weekend. Is that too much horse fun? Is there such a thing

as too much fun when talking about horses? Hell no! We've got parties, education and competitions coming up this spring and summer season! Come out and have some fun, play with us, and connect with other BTSC members!

Maybe we'll see a pop-up event and have an impromptu trail ride. The ride in April in the **Burnt Mountain Preserve** was perfect! Thank you, **Rich Vigue**, for organizing another awesome ride! (Wanna lead another one?)

Let's get outside and enjoy our horses!

*Julie*



**... AND THEY'RE OFF!**

## **Kentucky Derby Party**

**Saturday, May 3rd at 5:00 PM, Rocco's Pub**



This year's Kentucky Derby Party starts with a social hour at 5:00 PM. You will get gate assignments and betting odds prior to post time which is approximately 6:30 PM. Dinner follows the race.

You can order from the Rocco's menu. Consistent with the occasion, Rocco's will also offer a special menu of Kentucky Hot Browns and Mint Juleps. Your food and drinks are paid individually at the end of the evening. We have a private room with a capacity of 40 people. We encourage you to bring a guest. Everyone is welcome!

*Rich*

**For more info, send a text to: 770-289-7272 or E-mail to: [viguerich@gmail.com](mailto:viguerich@gmail.com).**

### **A Day At The Races!**

**Social Hour at 5:00 PM**

**Race Starts around 6:30 PM**

**Dinner Served after the Race**



**For More Information, Contact:**

**Rich Vigue, Text: 770-289-7272 or E-mail: [viguerich@gmail.com](mailto:viguerich@gmail.com)**



# Saddle Fitting Clinic - Cookout - General Meeting



**Saturday, May 10th, 11:00 AM  
Bent Tree Saddle Club Horse Park**

Join us on Saturday, May 10<sup>th</sup> for a saddle fitting clinic by **Lacey Halstead** of **Whole Horse Saddle Fit**. Lacey is a certified fitter not a saddle sales representative. She has many hours of classroom and hands-on learning. Lacey not only looks at the saddle to horse fit, she evaluates the overall movement of the horse and the rider.

The clinic will last about 1 ½ hours. During this time, Lacey will evaluate the saddle fit on 2-3 horses of different breeds. I'll need volunteer horses. She will also explain how to evaluate a saddle for seat size, width, straightness, etc. You are welcome to bring a saddle for this part of the program. She obviously can not evaluate everyone's saddle. After the clinic, Lacey will be available for a saddle fitting session with you and your horse for an additional fee of \$120. You must sign up before the clinic for a personal saddle fitting session. You pay Lacey directly for this. Please see her website for the details of a saddle fitting session. She did a great job with Deuce and me earlier this year!

**RESERVATIONS ARE REQUIRED BY MAY 5TH!!**

*Julie*

## Details and Information

**11:00 AM Saddle Fitting Clinic with Lacey Halstead**

**Potluck Cookout and General Meeting at the pavilion immediately following.**

**Menu: Hot dogs and hamburgers provided by the Club.**

**Potluck: Bring a side or dessert to share. Bring your own drinks.**

**Cost for the cookout is \$20 (this includes the clinic). Pay at the event.**

**Reservations required: we need to know how much food to buy.**

**Volunteers needed: horses for the clinic and people for grilling and serving.**

**Let us know if you can help!**

**RSVP REQUIRED BY MAY 5TH TO:**

**Julie Heinsman, [mymtnpeace@gmail.com](mailto:mymtnpeace@gmail.com), 404-550-0270**



**BOOK YOUR PERSONAL SADDLE FITTING AFTER THE CLINIC WITH LACEY**  
**Lacey Halstead, Certified Saddle Fitter, [www.georgiasaddlefitter.com](http://www.georgiasaddlefitter.com)**

# Western Pleasure Event

**Sunday, May 18th  
10:30 AM Check-In - 11:00 AM Kick-Off  
Bent Tree Saddle Club Arena**



## **Get Ready For Some Fun At Our Western Pleasure Event!**

**We've Got Three Exciting Events Lined Up:**

- Halter  
(Gaited, Non-Gated)
- Walk-Trot-Canter  
(Gaited, Non-Gaited)
- Trail Class

**Know the Best Part? It's Just \$10 to Enter!  
No matter how many events you jump into!**

**Let's Make It A Blast!**

**Want In?**

**RSVP by May 12th to: Megan Mathisen  
Give Me a Text or Call at 573-528-3482 and  
Let Me Know If You're Up For One, Two or All Three Events!**



# Hillside Farm's 2025 Trail Challenge

**Saturday, May 31st at 11:00 AM, Hillside Farm**

## A Wild Ride And A Fun Time!

This will be **Hillside Farm's 4<sup>th</sup> Annual Trail Challenge**. We promise it shall be nothing short of legendary—hooves, hearts, and horsepower! Riders and their trusty steeds will take on this 2 ½ mile journey against the ticking clock and in front of the watchful eyes of excited spectators.

Let the breeze carry the scent of spring and the sound of cheering fans, as horses power through the open fields like they own the earth beneath their hooves. The wooded paths, dappled with filtered sunlight in the canopy of trees, will cast a magical glow on your ride and provide exciting twists and turns to keep you on your toes!

What will be the heart of the challenge for you? The obstacles in the covered arena, the open fields or the woods? And just when you think it's over... BAM! *A surprise ending*—a wild card twist this year only to be seen upon arrival the day of the ride. It may be unexpected, quirky, daunting, easy or funny - the perfect grand finale to a course full of adventure!

Whether you are here to compete, ride for fun, or just soak in the action with a lemonade in your hand, we hope to see you here enjoying what we will be the riding event of the year! There are lots of places to view the riders in the open areas—hilltops, tailgates, or anywhere you set up your chair – please come join us!

**Spectators and guests welcome! RSVP appreciated.**

*Lisa & Jim Sylvia*

## This Event Is Now Full At 15 Riders! Thank You For Registering!

Lunch Price for  
Spectators: \$10

—

Menu: Hot Dogs,  
Hamburgers, Chips,  
Baked Beans,  
Potato Salad,  
Oatmeal Cookies

—

Bring Your Own Drinks



**2024 Trail Challenge Attendees**

Gates Open Early  
At 9:30 AM

—

Riders May Pull In  
9:30 AM - 10 AM

Rain Date Shall Be:  
June 1st—  
Same Bat Time,  
Same Bat Channel



# Obstacle Trail Challenge At The Eubanks' Farm

**Saturday, June 7th at 10:00 AM, Eubanks' Farm**

## Challenge Yourself - Challenge Your Horse!

This event is back after a 10-year break. Come ride your horse through obstacles spread throughout the farm. You can go in any order you desire.



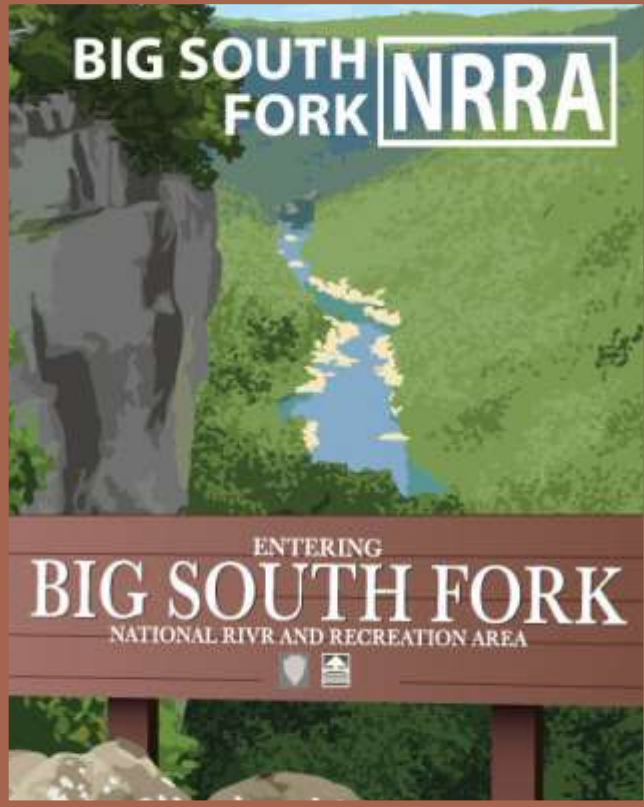
## Come play and invite your friends!

- **PARKING:** We will park trailers in the field above the barn. Please contact me if you have a LARGE rig as we may have to arrange differently. Please carpool horses if possible.
- **LUNCH:** Bring a lunch to enjoy in the barn after everyone completes the obstacles.
- **RSVP PLEASE!** I need volunteers at the obstacles as well as riders. I need to know who will be attending for planning purposes. Please reach out to me at (770) 265-9425 or at ceshuman51@hotmail.com. Looking forward to hearing from you!

*Claire*

**RSVP to Claire Eubanks by May 30th at  
(770) 265-9425 or ceshuman51@hotmail.com**

## Club Travel Trip - JUNE



**Big South Fork**  
**Thurs, June 12th - Mon, June 16th**

### Planning Information

There are miles of trails and many trailheads. I **highly recommend purchasing the National Geographic Trail Map for Big South Fork National River and Recreation Area.**

We will access trails from different trailheads that will require trailering to the trailhead. Many of the trails here are long 14-16 miles. There are shorter options so we don't have to take a long ride everyday. Some are also more technical. Your horse will need shoes or boots. It's a magnificent place to ride. There are many other activities here including hiking and fishing. See following page for lodging info.

*Julie*

### **Big South Fork National River and Recreation Area**

Check out the website for all the things you can do at:  
[www.nps.gov/biso](http://www.nps.gov/biso)

**Contact - Julie Heinsman**

**E-mail: [mymtnpeace@gmail.com](mailto:mymtnpeace@gmail.com), Ph: 404-550-0270**

# Big South Fork Trip (cont.)



## Accommodations & Information

1	<a href="http://www.bigsouthforklodge.com">www.bigsouthforklodge.com</a> , 931-879-4230 • They have lodge rooms, RV sites and stalls.
2	<a href="http://www.timberridgehorsecampground.com">www.timberridgehorsecampground.com</a> , 931-310-1530 • They have cabins, RV sites and stalls
3	<a href="http://www.truewestcampground.com">www.truewestcampground.com</a> , 931-752-8272 • They have cabins, covered wagons for sleeping, RV sites and stalls.
4	<a href="http://www.sprucecreekhorsecamp.com">www.sprucecreekhorsecamp.com</a> , 865-309-5205 • They have cabins, RV sites and stalls
5	<a href="http://www.laurelfork.com">www.laurelfork.com</a> , 423-286-5135 • They have cabins with stalls and paddocks at the cabin. Be sure to book a cabin with stalls as not all the cabins have horse stalls.
6	Bandy Creek Campground which is part of the Park. • You can call 877-444-6777 to reserve an RV site. The stables are across the road and stalls are reserved through 423-286-7433
7	There are Airbnb cabins available in the area that have stalls or paddocks. You want to stay along the west side of the Park off TN 297.

## Food Information

*	One thing that's hard to do here is find a restaurant. We can go into Jamestown one night, and we can gather at a cabin for a meal or two. We'll figure that out when we get a headcount on who is going.
---	---

**Contact - Julie Heinsman**

**E-mail: [mymtnpeace@gmail.com](mailto:mymtnpeace@gmail.com), Ph: 404-550-0270**



## E-Mok-See Recap - Saturday, April 5th

Our inaugural O-Mok-See of the season was held on April 5th, and it was a fantastic day with a great turnout of ten riders. The weather couldn't have been more perfect—sunny skies, a light breeze, no humidity, and temperatures hovering around a comfortable 80F degrees. Riders and volunteers alike arrived early, eagerly pitching in to get everything set up and ready for a day full of fun and competition.

We kicked off with the classic events—Pole Bending, Baton Relay, and the Ball Throw—each offering a fun challenge for both riders and horses. The two mystery events kept everyone on their toes: the Barrel Weave and the T-Weave, which added a little extra excitement to the mix.

Lisa and Janet kept the times and stats. Jim and Rich set up the equipment and timers, and everyone helped switch the event equipment such as Claire, Karie, Kathy, Betsy, Jim and others. Betsy ran the gate, Karie took pictures, and it all ran rather smoothly.

Claire started each event with a demonstration of the rules and goals. The competition was fierce, and it was Claire and Elise Eubanks who stood out, taking home the Champion and Reserve Champion ribbons, respectively. Claire clinched the top spot, with Elise just a

single point behind—what an incredibly close race! The top five riders of the day were:

- 1st Place - Claire Eubanks
- 2nd Place - Elise Eubanks  
(only 1 point from the lead!)
- 3rd Place - Julie Heinsman
- 4th Place - Lig Quigly
- 5th Place - Abby Benton



## E-Mok-See Recap (cont.)

But the true essence of this event goes far beyond the ribbons. It's a day when we all come together to work on our horsemanship skills, offering each other support and encouragement. More than a competition, our BTSC O-Mok-See is a celebration of equestrian camaraderie, where friendships are strengthened and memories are made.

Not only did Claire take champion for the day but she did it on a horse of a different color. A horse that made his first debut for western riding and O-Mok-See games. She did it on none other than Rusty—DJ's Rusty—a horse we've all watched grow up to become an awesome all-around steed, loved by children and adults alike. The proof is in the pudding when the rider prevails, no matter the horse she chooses. Thanks Claire for

all your guidance, influence and direction that you give us at every equine event. A true teacher in and out of school and an exemplary equestrian.

The event kicked off around 11 AM, and after a full afternoon of fun and fellowship, the trailers started rolling out around 2:30 PM with everyone heading home with smiles, great memories and a little extra polish on their riding skills.

Our next scheduled event is May 18<sup>th</sup> - the Western Pleasure Event at the Arena sponsored by Megan Mathisen & Lorraine Donohue. This will be judged by Aly Rattazzi Jones. I hope everyone shows up to support us or ride in the event. More to come!

*Lisa*





## E-Mok-See





# E-Mok-See





# E-Mok-See





# E-Mok-See





## Burnt Mountain Preserve Trail Ride Recap - Sun, April 13th



This ride was originally scheduled for Sunday, April 6th. That ride was cancelled when no one signed up for it. So Kathy Hardin and I decided that we were going to do the ride on Sunday, April 13th. Word quickly spread and people started calling me to join in on it. So I put it on the Club's Facebook page. Almost immediately I had four more riders on the ride. I then sent an E-mail to the Club. As a result of all that, two days before the ride, we had 11 riders signed up.

At 10:30 AM on the day of the ride, eight riders left the Saddle Club Horse Park bound for the Burnt Mountain Preserve.

We were down two guests who couldn't make it, one of them was Kathy Hardin

whose idea it was to do the ride. Sorry Kathy. It was a perfect day, weatherwise, with the sun shining, temperatures in the 60s, and little to no wind. We rode down Windy Ridge Road to the Preserve and went counterclockwise on the rough two-track trail that passes by the old dilapidated barn.

Safari Slang 101 has the following definition for "Bushwhacking": Sometimes, the best paths are the ones you make yourself. Bushwhacking means driving (or riding) through thick vegetation without a clear trail, adding a dash of adventure to your journey. Julie and Claire experienced that adventure and earned their bushwhacking merit badges shortly after passing the barn. That little section of trail seems to grow bushes faster than



## Burnt Mountain Preserve Trail Ride Recap (cont.)



any other trail in the Preserve. So much so, that every time I go through there I want to kick myself for not having brought a machete.

Which brings me to a piece of advice for the next time you ride there, and that is: if you don't have a machete with you, make sure to ride in the back of the group. 😊



time to get home and watch the final round of the Masters.

My thanks to everyone who came on this ride. For me it was like times gone by. Participants were Claire Eubanks, Julie Heinsman, Deb Liggett, Lig Quigley, Sandy Shumate (guest), Sandy Stephenson, DJ Suberk, and yours truly bringing up the rear.

*Rich*



Continuing on the adventure, we made it to the Bruce Prince sign where we broke for lunch and then headed down to Champion Creek. After watering the horses, we rode along the creek and circled back to Windy Ridge Road, arriving at the Horse Park around 2:00 PM. Just enough





## Masterson Method Demo/Clinic Recap - Sun, April 27th

### Three Key Words - *"Less Is More"*



What an amazing day for horses and people. It was pretty much the best of everything: weather, horses, horse friends and teachers. In this case, our clinician, **Stephanie Pfitzer of High Point Equine Bodyworks**, wasn't the only teacher. We not only learned a lot from our horses and about our horses, but above all, about ourselves.

We had eight participants, seven horses and four auditors. Each equine-human



duo was unique in what the horse needed and how the horse responded.

Throughout the clinic, Stephanie emphasized her three key words to remember: *"Less Is More."* This was very true for several participants, such as, Denese Williams, who had to step away from



## Masterson Method Demo/Clinic Recap (cont.)



her stoic horse in order to give him the space to let down and release tension. After stepping back and giving him a minute, he started to lick and chew. Even when we try to help our horses release tension, we apply pressure without realizing it. Horses are incredibly sensitive!

We had a few other participants whose horses were extremely easy to let down. First one rolled very soon into the bladder meridian technique. A lay down, roll and shake is about as big of a relaxation as you can get from a horse.



Another participant's horse was doing the biggest eye-rolling yawns I've ever seen. Clearly letting go of lots and enjoying the interaction with the owner. This same horse needed her owner to back off on pressure at the TMJ. You have to always keep in mind that... *"Less Is More."*

By the end of the event, all the horses had their heads down and lower lips hanging. A very happy herd! Hopefully happy people too!

*Julie*



## From the Editor

What do you do for your ongoing equine education? One way is to attend a BTSC educational event. **Julie Heinsman** did a great job organizing the **Masterson Method Demo** last month. There's a **Saddle Fitting Clinic** on May 10th. Hope to see you there!

Another way is to go back to school. Did you know that UGA offers a FREE online program called **The Equine Exchange Lunch & Learn**? The Equine Exchange is a 60-minute Zoom call held once a month hosted by UGA's Lincoln County Extension. The program focuses on information that horse owners can take home and use immediately. You can learn about topics such as: older horse care, dealing with hot weather, spring grazing, insect control, eye & ophthalmological diseases, hoof care, bits & biting, and much more!

I was curious. So I attended April's Zoom meeting about western saddle fitting. With about 20 other people from all over Georgia, I sat at my kitchen table on my computer and watched, listened and learned about a horse's conformation, western saddle construction, and how the two are supposed to go together. It's totally interactive, and you can ask questions along the way. On May 5th at noon, the topic will be about trailering, trailer safety, and loading with Lucy Ray, M.S. To attend via Zoom or watch videos of prior sessions, click [HERE](#).

Happy Back to School in May!

*Karie*

## Membership Report

The Saddle Club has 69 members as we approach the end of April 2025. We welcome new member **Mary Campbell** of Jasper, GA and her horse Socorro. Mary lives just outside Bent Tree and boards her horse at the Schultz farm. We are looking forward to seeing her and Socorro at upcoming events.

If you know of someone interested in joining our Club, please have them complete an application that is available on our website. Or have them contact me at 770-757-8596 if they have any questions. We are planning a fun and exciting year. See you at an upcoming event.

*Bob*

### JOIN THE CLUB!

You Can Click [HERE](#) To  
Complete Our Membership  
Application Form Online!



Visit Our Website:  
[www.BentTreeSaddleClub.com](http://www.BentTreeSaddleClub.com)

# Treasurer's Report

*Prepared by Ronda Erway, Treasurer, April 24, 2025*

<b>Beginning Balance</b>		<b>\$2,779.62</b>
<b>Debits</b>		
<b>Date</b>	<b>Description</b>	
4/4/25	Jim Sylvia - Website Maintenance	(\$66.04)
<b>Total Debits</b>		<b>(\$66.04)</b>
<b>Deposits</b>		
<b>Date</b>	<b>Description</b>	
4/4/25	O-Mok-See Fees	\$100.00
4/23/25	Membership Fees	\$40.04
<b>Total Deposits</b>		<b>\$140.04</b>
<b>Ending Balance</b>		
<b>Date</b>		
4/24/25		<b>\$2,853.62</b>

\*Pending approved expenditures - Randy Taylor: Judge's stand repair for \$500.-



### **The Sylvia's Riding Vacation in Altoona, Florida**

This past February marked our third trip to sunny Altoona, Florida. In previous years, we spent one or two weeks there with fellow club members, including Julie Heinsman and Claire and Elise Eubanks. We discovered a hidden gem—an equestrian RV ranch called Fiddler's Green. This quiet camp is primarily home to equestrians, though not exclusively. Every visit has been a wonderful experience, filled with great friends, delicious food, and ample outdoor adventures. We've encountered alligators, bears, and sandhill cranes, lots of turkeys and even some peacocks.

During past trips, we met up with Barba-

ra Auchter, who moved to the Villages a few years back and was just 40 minutes away. With her guidance, we crossed the I-75 bridge on horseback and explored the Ocala Horse Park's Eventing Course—an unforgettable experience.

This year, Jim and I made a bigger commitment, deciding to stay for the entire month of February. During these 28 days, we embarked on 17 interesting rides, exploring some of the most scenic trails in the region. From our RV camp, we had direct access to the Altoona trails, part of the Ocala National Forest. We also trailered out to nearby locations such as Ocklawaha Prairie Preserve, Sunny Hill North and South, Sawgrass Preserve, and the Seminole State Forest.

While Florida is known for its flat, sandy



## The Sylvia's Riding Vacation in Altoona, Florida (cont.)



terrain, we were surprised by the diversity of landscapes. The Ocklawaha area, for example, is a watershed project from the 1970s. Riding along the levee on a clear day, with the Ocklawaha River as part of the St. George River Watershed Project stretching out before us was breathtaking. It may not be Montana or Colorado, but beauty in nature can be found everywhere.

For the last ten days of our stay, Don and Denise Williams joined us. Together, we explored Mount Dora and spent a fantastic day at the World Equestrian Center—a true playground for the rich and famous from around the world. We watched lev-

el 5 Jumpers compete and even saw a few jump-offs. Dogs were welcome almost everywhere, including the magnificent hotel. The very inclusive artwork throughout the hotel was only of dogs or horses.

The weather was nearly perfect for riding with temperatures ranging from 85°F to 70°F most days. We only had two or three days of rain and a few cooler days, where 55°F felt chilly after acclimating to the Florida warmth. Staying at Fiddler's Green provided a comfortable and convenient home base, allowing us to fully





## The Sylvia's Riding Vacation in Altoona, Florida (cont.)



immerse ourselves in the equestrian lifestyle. From winding forest paths to open prairie stretches, every trail offered a new perspective on Florida's natural beauty. The dogs, too, were in heaven and got two long walks every day down a

live oak-laden sandy trail.

It was a month well spent filled with unforgettable rides, wonderful company, and savored memories-both thrilling and heartwarming.

*Lisa & Jim*



## Scoring Your Horse's Body Condition

Equestrians use the Henneke Horse Body Condition Scoring System to determine if a horse is too skinny, overweight or just right.

**Here's How to Score Your Horse**

**CLICK HERE FOR THE VIDEO**



## Volunteer Update

Please let us know if you can help:

### **May 10th, 11 AM, Saddle Fitting Clinic - Cookout - General Meeting**

- Three horses needed for the clinic
- Volunteers needed for grilling/serving

Contact: Julie Heinsman

### **May 18th, 11 AM, Western Pleasure Event**

- Volunteers needed to help in the arena and at the gate

Contact: Megan Mathisen

### **May 31st, 11 AM, Hillside Farm Trail Challenge**

- We have plenty of volunteers,

Thank you!

Spectators and Guests Are Welcome!

Your RSVP Is Appreciated.

Contact: Lisa Sylvia

### **June 7th, 10 AM, Obstacle Trail Challenge At The Eubanks' Farm**

- Volunteers needed at the obstacles

Contact: Claire Eubanks

## Secretariat - A Horse With A Big Heart

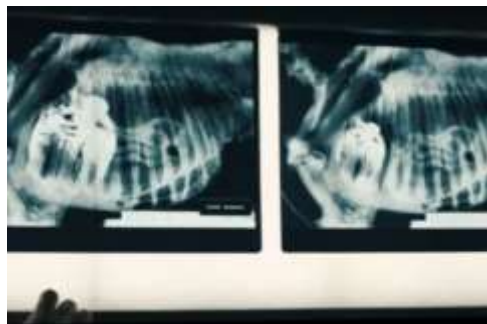


Looking at the beginning of Secretariat's career race history, it was clear he was a talented colt who deserved to be highly regarded on the Triple Crown trail. The three classic races would only grow his fame. He still holds the fastest times for the Kentucky Derby, the Preakness Stakes, and the Belmont Stakes. His Derby time was 1:59.40.

Secretariat's heart size still remains a wonder of the racing world. The analogy, of course, is that Secretariat's

power came from within, as well. He had the breeding to be a great race horse, but he also had something that made him more powerful and unique. His heart was more than twice the size of an average horse.

Secretariat had an unusually large heart – estimated at 22 pounds, while the average Thoroughbred heart is 8.5 pounds. This tremendous cardiovascular system, pumping oxygen into his lungs at an abnormally high rate, was clearly a source of his stamina and power.



The enlarged heart wasn't the only thing that allowed Secretariat to smash record after record during his 1973 Triple

Crown campaign. He was also known for his astonishing conformation.



Secretariat's absence of major conformation flaws was important, as horses with well-made limbs and feet are less likely to become injured. Secretariat's hindquarters were the main source of his power, with a sloped croup that extended the length of his femur. When in full stride, his hind legs were able to reach far under himself, increasing his drive. His ample girth, long back and well-made neck all contributed to his heart-lung efficiency.

Secretariat is widely considered to be the greatest racehorse of all time.

*Courtesy of horseracingnation.com*

## Deuce's Impression of a Mountain Goat!



## The Official Cocktail of The Kentucky Derby

### Mint Julep

Makes 1 Cocktail

#### Ingredients

- 1/2 oz. superfine sugar
- 1 oz. hot water
- 8 mint leaves, plus one mint sprig
- 2 oz. bourbon

#### Instructions

- 1) Dissolve the sugar in the water in an old-fashioned glass (or julep cup).
- 2) Add the mint leaves and press them lightly with a spoon.
- 3) Add the bourbon.
- 4) Fill the glass with cracked ice and stir.
- 5) Plant the mint spring in the ice alongside a short straw.



**For Riders Over 21 Years Of Age.  
Never Drink and Ride!**

*Courtesy of Gardenandgun.com*

Send your favorite homemade horse treat or rider recipe to: [NewsletterBTSC@gmail.com](mailto:NewsletterBTSC@gmail.com)



## How Much Was The Most Expensive Horse Ever Sold?

Fusaichi Pegasus, the legendary Thoroughbred, galloped his way into history with a stellar racing career highlighted by his 2000 Kentucky Derby victory.

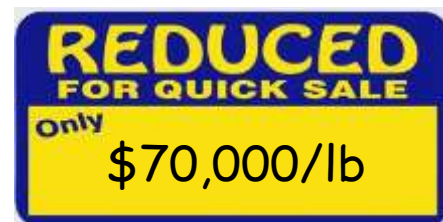
His record-breaking purchase price of \$70 million cemented his status as the most expensive horse ever sold, capturing the world's attention.

With triumphs at prestigious races like the Irish Derby and the Dubai World

Cup, Fusaichi Pegasus set new standards of excellence on the racetrack. His legacy endures through his offspring, including notable Grade 1 winners like Bandini, Roman Ruler, Champ Pegasus, and Haradasun.

His name, a fusion of owner Fusao Sekiguchi's name and a Greek mythological figure symbolizes his enduring influence in the world of horse racing.

*Courtesy of Sotheby's*





# Annual Schedule of Events 2025

(Work in Progress)



Date	Event	Time	Place	Organizer
Sat., Mar. 8	Horse Park Workday	10:30 AM	Bent Tree Saddle Club Horse Park & Arena	Karie Kruse
Mon., Mar. 17	St. Patrick's Day Dinner	6:00 PM	Rocco's Pub, Jasper, GA	Karie Kruse
Sat., Mar. 22	Poker Ride	10:30 AM	Bent Tree Saddle Club Horse Park & Erway Farm	Ronda Erway
Sat., Apr. 5	1st O-Mok-See	11:00 AM	Bent Tree Saddle Club Arena	Lisa Sylvia
Sun., Apr. 13	Burnt Mount Preserve Ride	10:00 AM	Bent Tree Saddle Club Horse Park	Rich Vigue
Sun., Apr. 27	High Point Equine Bodywork, Masterson Method & Demo	1:00 PM	Bent Tree Saddle Club Arena	Julie Heinsman
Sat., May 3	Kentucky Derby Party	5:00 PM	Rocco's Pub, Jasper, GA	Rich Vigue
Sat., May 10	Saddle Fitting Clinic, Cookout, General Meeting	11:00 AM	Bent Tree Saddle Club Horse Park	Julie Heinsman
Sun., May 18	Western Pleasure Event	11 AM	Bent Tree Saddle Club Arena	Megan Mathisen
Sat., May 31	Hillside Farm Trail Challenge	11:00 AM	Sylvia's Farm	Lisa & Jim Sylvia
Sat. Jun 7	Obstacle Trail Challenge	10:00 AM	Eubanks' Farm	Claire Eubanks
Thur. Jun 12 - 16	Big South Fork Trip	-	Big South Fork National Pk Jamestown, TN	Julie Heinsman
Sat., June 21	2nd O-Mok-See	10:00 AM	Bent Tree Saddle Club Arena	Lisa Sylvia
Fri., July 4	July 4th Parade	TBD	Downtown Jasper	TBD
July	Poker Party	TBD	TBD	Julie Heinsman
Aug	Garbage Can Cookout	TBD	Julie's Farm	Julie Heinsman
Sat., Sept 6	Chickamauga Ride	TBD	Chickamauga Battlefield, Fort Oglethorpe, GA	Ronda Erway
Sat., Sept. 20	Educational	TBD	Bent Tree Saddle Club Arena	Julie Heinsman
Sat., Sept. 27	3rd O-Mok-See	11:00 AM	Bent Tree Saddle Club Arena	Lisa Sylvia
Thur. Oct. 2 - 6	East Fork Stables Trip	-	East Fork Stables Jamestown, TN	Julie Heinsman
Sun., Nov. 9	Educational	TBD	Bent Tree Saddle Club Arena	Julie Heinsman
Sat., Dec. 13	Year-End Party and National Day of the Horse	6:00 PM	Rocco's Pub, Jasper, GA	Karie Kruse





# May 2025

Sun

Mon

Tue

Wed

Thu

Fri

Sat

27

28

29

30

1

2

3

Kentucky  
Derby  
Party

4

5 **RSVP**  
Saddle  
Fitting—  
Cookout

6

7

8

9

10

Saddle  
Fitting—  
Cookout

11



**Mother's  
Day**

12 **RSVP**  
Western  
Pleasure  
Event

13

14

15

16

17 **RSVP**  
Hillside  
Farm  
Trail  
Challenge

18

Western  
Pleasure  
Event

19

20

21

22

23

24

25

26



Memorial  
Day

27

28

29

30 **RSVP**  
Obstacle  
Trail  
Challenge  
**Eubanks'**  
Farm

31

Hillside  
Farm  
Trail  
Challenge

## More Events of Interest

When	What	Where
May 2 - 3	Jasper Pro Rodeo - Pickens County Stampede	Jasper Pro Rodeo JeepFest Location, Jasper, GA <a href="http://www.rodeoticket.com">www.rodeoticket.com</a> or Facebook page
May 10 - 11	Greater Atlanta Dressage Southern I & II	GDCTA Georgia International Horse Park Conyers, GA <a href="http://www.gdcta.wildapricot.org/events">www.gdcta.wildapricot.org/events</a>
May 15 - 18	SERCHA Travelin Jonez Spring Showdown	Southeastern Reined Cow Horse Assoc. Georgia National Fairgrounds Perdue Arena, Perry, GA <a href="http://www.gnfa.com">www.gnfa.com</a>
May 17	AQHA Rookie, Novice and Open Breed Classes	GQHA Georgia International Horse Park Conyers, GA <a href="http://www.gqha.com/novice.asp">www.gqha.com/novice.asp</a>
May 22	Speed Special Event Barrels - Poles - Stakes All Breed Open, Amateur and Youth	GQHA Georgia International Horse Park Conyers, GA <a href="http://www.gqha.com/novice.asp">www.gqha.com/novice.asp</a>
May 22	Level 1 (Novice) Show Series AQHA L1 Amateur, AQHA L1 Youth and Open Breed Classes	GQHA Georgia International Horse Park Conyers, GA <a href="http://www.gqha.com/novice.asp">www.gqha.com/novice.asp</a>
May 23 - 25	High School & Jr. High School State Finals Rodeo	Georgia High School Rodeo Assoc. Georgia National Fairgrounds Perdue Arena, Perry, GA <a href="http://www.gnfa.com">www.gnfa.com</a>
May 30 - June 1	HQHA Peach Country Circuit AQHA/ APHA/ NSBA	Horseman's Quarter Horse Assoc. Georgia International Horse Park Conyers, GA <a href="http://www.thehqha.org/events">www.thehqha.org/events</a>

*"He was a strong foal, and he had an air about him.  
He was very self-confident. He was the boss."*

- Penny "Tweedy" Chenery, Breeder and Owner of Secretariat



# **Bent Tree Saddle Club**

## **2025 Executive Committee**

### **President**

Julie Heinsman  
(404) 550-0270  
mymtnpeace@gmail.com

### **Past President**

Rich Vigue  
(770) 289-7272  
viguerich@gmail.com

### **Vice President**

Karie Kruse  
(706) 502-0212  
kariekruse@gmail.com

### **Past Past President**

Jim Sylvia  
(770) 401-8332  
jim.sylvia3@gmail.com

### **Treasurer**

Ronda Erway  
(402) 540-3338  
rrerway@gmail.com

### **Secretary**

Lisa Sylvia  
(770) 401-8333  
lisasyvia3@gmail.com

### **Bent Tree Liaison**

Bob Crawl  
(770) 757-8596  
bobcrawl@etcmil.com

### **Appointee**

Megan Mathisen  
(573) 528-3482  
megank143@hotmail.com

## **2025 Positions**

Membership  
Bob Crawl

E-Mail Distribution  
Lisa Sylvia

Website Support  
Jim Sylvia

Newsletter Editor  
Karie Kruse



**Visit Our Website:**  
**[www.BentTreeSaddleClub.com](http://www.BentTreeSaddleClub.com)**

